

ONLINE AUCTION

ONLINE AUCTION OF SURPLUS MACHINERY FROM DRILL RIG MFR. INCLUDING 25 TON STRADDLE CRANE, ARI-HETRA MOBILE LIFTS, PORTABLE GANTRY CRANES, CNC MACHINING, WHEELABRATOR, FABRICATING, WELDING AND RELATED

SURPLUS EQUIPMENT FROM SCHRAMM

800 E Virginia Ave. – West Chester, Pennsylvania 19380

40 Miles West of Philadelphia, PA

ONLINE BIDDING ENDS:
THURSDAY, FEBRUARY 6TH AT 11:00 AM

Inspection: Day Prior from 11:00 AM to 3:00 PM
or by appointment with John@cia-auction.com

18% BUYERS PREMIUM IN EFFECT FOR ALL PURCHASES

AUCTIONEERS:

Cincinnati Industrial Auctioneers, Inc.
License No. AB1204

Jeffrey L. Luggen - License No. AU1719
Joseph M. Luggen - License No. AU5019

BIDDER INSTRUCTIONS

- > **Bidders in the United States** will receive approval forms from our office upon registering for the auction on www.bidspotter.com, pending the Auctioneers review of the information provided you will be approved at the Auctioneers discretion.
- > **Bidders outside of the United States** must post a deposit of approx. 25% of their planned spending budget or \$2,500.00 minimum with Cincinnati industrial auctioneers in order to be approved to bid. Those who do not post the deposit will not be approved. **period.**

 BidSpotter.com



CINCINNATI INDUSTRIAL AUCTIONEERS

auctioneers | appraisers | since 1961 | cia-auction.com | info@cia-auction.com
2020 Dunlap St., Cincinnati, Ohio 45214 Phone 513-241-9701 Fax 513-241-6760



FIRST CLASS MAIL!

PRE-SORT
FIRST CLASS
U.S. POSTAGE
PAID
CINCINNATI, OHIO
PERMIT NO. 3593



Important Mail

TO BE DIRECTED TO THE ATTENTION
OF EXECUTIVE PERSONNEL

ONLINE AUCTION

SURPLUS EQUIPMENT FROM SCHRAMM

800 E Virginia Ave.

West Chester, Pennsylvania 19380

40 Miles West of Philadelphia, PA

ONLINE BIDDING ENDS:

**THURSDAY, FEBRUARY 6TH
AT 11:00 AM**

Inspection: Day Prior from 11:00 AM to 3:00 PM
or by appointment with John@cia-auction.com

STRADDLE CRANE
25 Ton RPC / Crane Co., LLC Model C500 Diesel Powered Straddle Crane; s/n 389, Crane Co. Job No. 4225, 14' Between Gantry Legs, 19' Spreader Bar, Mfg. Date 1980, Refurbished by Crane Co. 2012

MOBILE LIFT UNITS
120,000 Lb. ARI-Hetra Model HDML-16 Four-Post Mobile Lifting System; s/n 120116068, 67 Power, 69 Slave, 66 Slave, (4) 15-Ton Units, Used Less than 5x (Mfg. 2012 - Like New)

80,000 Lb. ARI-Hetra Model HDML-18 Two-Post Mobile Lifting System; s/n 12070514 and 12070515, (2) 20 Ton Units, Used Less than 5x (Mfg. 2012 - Like New)

GANTRY AND JIB CRANES

(3) 7.5 Ton x 17' Approx. Spanco Self-Traveling Gantry Cranes; RM 5x5 Series Electric Hoists (2006), Pendant Control, 18" Top I-Beam, 17' (Approx.) Between Gantry Post, 11" Under Hook, p/n 53-002 (New 2006)

(2) 5 Ton x 14' Approx. Spanco Self-Traveling Gantry Cranes; Harrington 5 Ton Hoists, 165" Between Posts

2-Ton Spanco Gantry Crane; Harrington 2-Ton Hoist

(6) 2 Ton Column Mount Jib Cranes with Gardner Denver Pneumatic Hoists

BLAST SYSTEM

Wheelabrator Pass-Through Monorail Blast System; s/n A-129296/A-192950, 60" x 140" Window, 28' Tunnel Length, (8) 25-HP Blast Heads, Monorail Chain Feed, Wheelabrator Dust Collector and Reclaim (Upgraded in 2010)

FABRICATING MACHINERY

1/4" x 10' Accushear Model 625010 Hydraulic Squaring Shear; s/n 4306, with Accushear Back Gauge

55 Ton x 6' Pacific Model J55-6 Hydraulic Press Brake; s/n 5235, 6' Overall Bed, 55" Between Columns, Hurco

Autobend Back Gage, Metaltech Laser Press Brake Controls

9" x 9" Tennsmith Model PN9 Hydraulic Notcher; s/n 13672, 8 Ga. MS Capacity

W.A. Whitney Punch / Duplicator, 50" Throat, 70" x 96" Table

(3) 24" x 48" Adjustable Roller Ball Tables

CNC MACHINING AND RELATED

Mazak MTV-515/40N CNC VMC w/ Pallet Changer; s/n 72536 Mazatrol 640M Control, 21" x 51" Table, Dual Table Shuttle System, 60-Station ATC, 50 Taper (New 2004)

Mori-Seiki MV-80 CNC VMC; s/n 374, 32" x 75" Table, 40-Station ATC, Fanuc 11M Control

Hitachi Seiki Hitec-Turn 40S CNC Slant Bed Lathe; s/n HTS40088, Fanuc Control

Hitachi Seiki Hi-Tec-Turn 25S CNC Slant Bed Lathe; s/n HTS25487

WELDERS AND FUME COLLECTORS

(5) 450 Amp Miller Deltaweld 452 Welders; (2) w/ Millermatic 554E Wire Feeds

(11) Airflow Model PCH2-BT-IA-PG6 Fume Collectors w/ Airflow "E-Z Arm" Articulating Arm (New 2011)

GRINDING / GEAR / HONING

Fellows 6A-Type Gear Shaper; s/n 17364

12" x 24" Okamoto Model Accugar-124N Hydraulic Surface Grinder; s/n 2029

Cincinnati Centerless Grinder; s/n 4142H1Y-219

14" Hammond Model 14D 3 HP Carbide Grinder; s/n 4206

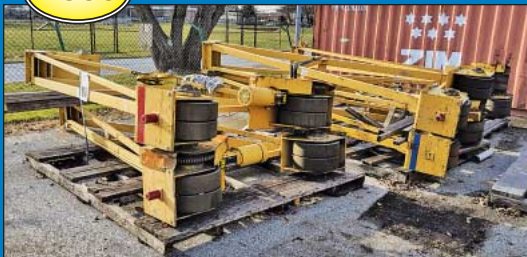
Sunnen Model CK-10 Cylinder King Block Hone; s/n 1314

Sunnen Hone

2004



2006



NEW



8-HEAD

See website www.cia-auction.com For Detailed Specifications, Photos, Link To Online Bidding And Terms Of Sale.